

TLF 30W LED Track Light

Description:

TLP LED Track Lighting providing high-quality master light effect with a very complete and systematic solution based on the user's point, line and plane lighting requirements, focusing on creating space consistency and providing users with an excellent lighting experience. TLP offers 6 types of beam shapes both in spot and flood wall washing lighting with uniform light distribution and smooth transition well restore the real appearance of the exhibits. Concealed 0/1-10V Control Gear. Built-in 0/1-10V flicker free individual dimmer, small and delicate to ensure the perfect appearance whilst offers smooth brightness adjustment experience.

High efficiency heat convention design in the compact design ensures 50,000 hrs lifespan. Perfect thermal management integrates small body with big wattage makes the ceiling looks clean and comfortable.



Application:

- Gallery museum&showroom lighting .
- Gym, hotel and stage lighting.



Information:

Features:

- SDCM<3
- Class 2
- UGR less than 19
- Flicker Free
- No UV or IR radiation
- Spot or flood wall washer optical lens optional
- Concealed 0/1-10V Control Gear 1-100% smooth brightness adjustment
- Flexible beam direction adjustable: 355° horizontally and 90° vertically.
- Strongly light up an object from far or high distance.
- Medium useful life > 50,000 hours (L80B50) at ambient temperature of 25 °C

Specification:

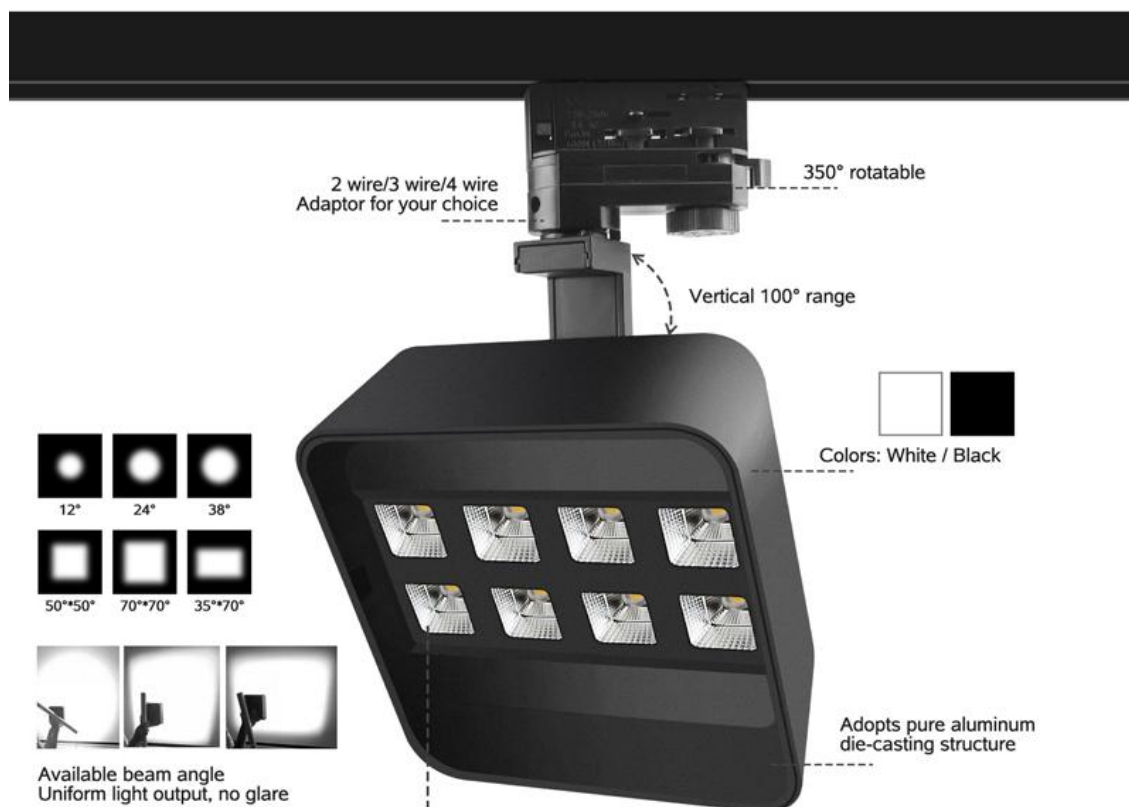
- Power supply : Italy Archi
- Track adapter: 2 wires 3 wires 4 wires
- Housing material: aluminum.
- Housing color: White, Black
- Working environment temperature: -20oc ~ +45oc.
- Lamp Certificates: CE ROHS SAA
- Driver Certificates : TUV CB UL CE ROHS SAA

Model No.	Input voltage(V)	Power (w)	LED Chip	Luminous flux (lm) (±5%)	Beam angle(o)	CCT (K)	CRI
OP-TLF30W	AC220-240V	30W	OSRAM	3000LM	Round: 12° / 24° / 38° Rectangle : 50*50° /70*70° /35*70°	2700K 3000K 4000K 5000K	90+

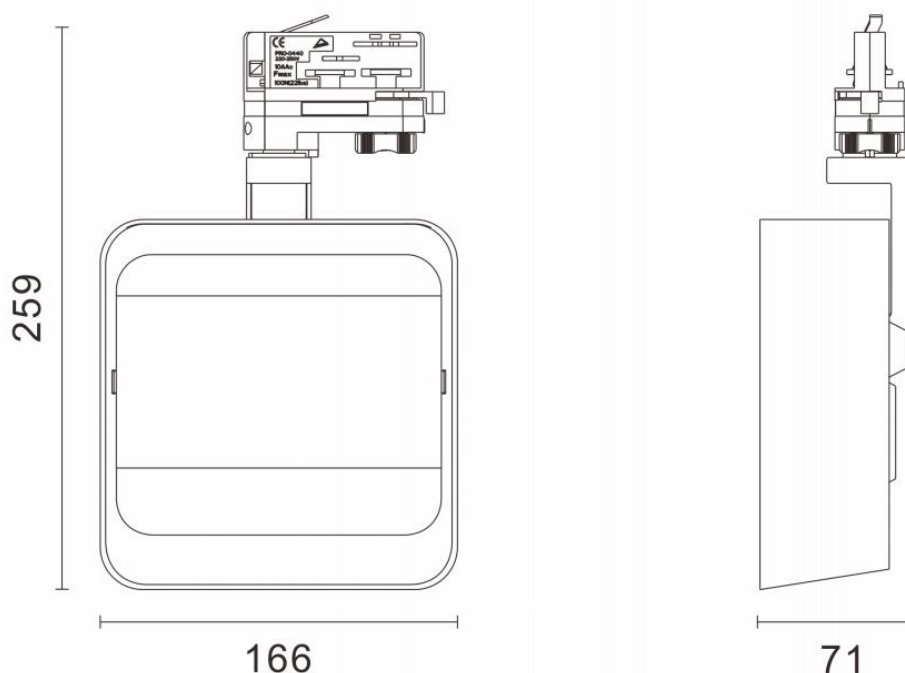


Features :

TRACK LIGHT FEATURES



Dimension :



Shenzhen
Tel: 008

Shenzhen office : Building 14K No.108 Zhongxin Road Xinqiao Street Baoan District Shenzhen City Guangdong Province
Zhongshan factory : No. 50, Shengyu 1st Street, Henglan Town, Zhongshan City, Guangdong Province