



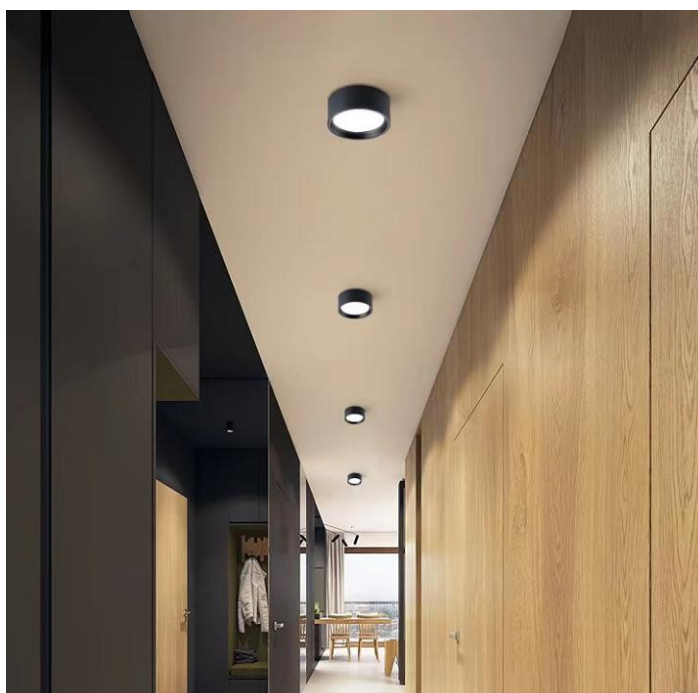
Surface Mounted Drum LED Downlight

Description:

DLO SMD series with a fashionable drum design, this series of LED surface mounted ceiling light is a commendable choice for commercial and residential places, like home, shop, hotel, restaurant and so on. Firstly, it adopts aluminum profile providing excellent thermal dissipation. Secondly, the driver can be put into the light body, which is more convenient for customers to save spaces and install them. Thirdly, it can also be a suspension light with a hanging fixture..

Application:

- Shopping mall, jewelry shop and fashion store lighting.
- Art gallery, furniture, museum and showroom lighting .
- Gym, hotel, hospital and stage lighting.



Information:

Features:

- Lighting Source: OSRAM Bridgelux
- Cylinder Drum aesthetic appeal
- Available in 80 90+.
- Dimming methods: ON/ OFF Triac Dimmable 0-10V DALI
- Die cast aluminium housing, good heat dissipation
- No need Cutout , surface mount install or hanging install.
- Strongly light up an object from far or high distance.
- Unique and compact design with perfect thermal management.
- High quality LED, No UV or IR radiation

Specification:

- Power factor: >0.90.
- Color Temp.(Color) : 2700K 3000K 3500K 4000K 5000K
- Housing material: aluminum.
- Housing color: White Black
- Working environment temperature: -20oc ~ +45oc.
- Lamp Certificates: CE ROHS
- Driver Certificates : TUV CB UL ETL CE ROHS SAA

Model No.	Input voltage(V)	Power (w)	LED Chip	Luminous flux (lm) (±5%)	Beam angle(o)	CCT (K)	CRI	Size (mm)
OP-DLO9W SMD	AC220-240V AC100-277V	9W	OSRAM Bridgelux	900LM	100	2700K 3000K 4000K 5000K	80+ 90+	D95 H68mm
OP-DLO12W SMD	AC220-240V AC100-277V	15W	OSRAM Bridgelux	1200LM	100	2700K 3000K 4000K 5000K	80+	D120 H70mm
OP-DLO18W SMD	AC220-240V AC100-277V	20W	OSRAM Bridgelux	1800LM	100	2700K 3000K 4000K 5000K	90+	D148 H80mm
OP-DLO30W SMD	AC220-240V AC100-277V	30W	OSRAM Bridgelux	3000LM	100	2700K 3000K 4000K 5000K	80+	D215 H100mm
OP-DLO35W SMD	AC220-240V AC100-277V	30W	OSRAM Bridgelux	3500LM	100	2700K 3000K 4000K 5000K	90+	D215 H100mm

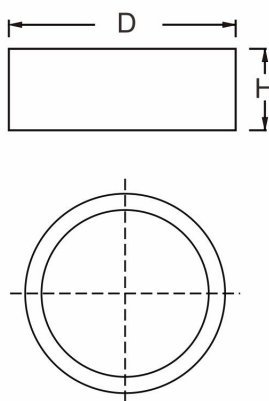
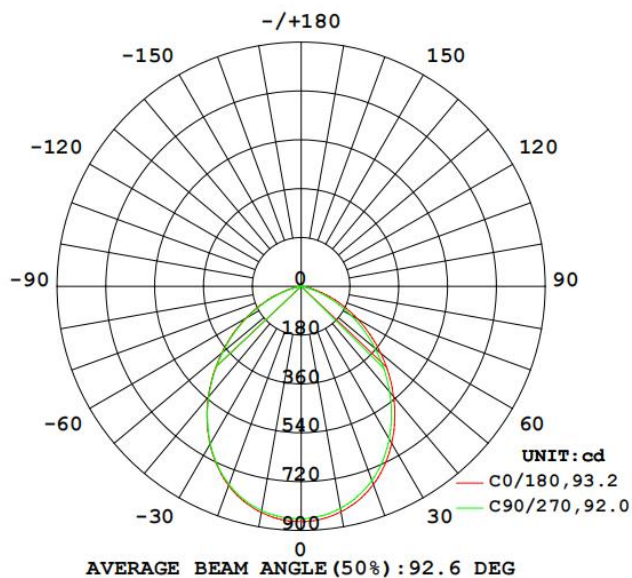


Photo-metric :

LUMINOUS INTENSITY DISTRIBUTION DIAGRAM



Flux out: 1227 lm

Height	Eavg, Emax	Angle: 91.28deg	Diameter
1m	364.4, 867.4lx		204.52cm
2m	91.09, 216.8lx		409.03cm
3m	40.48, 96.37lx		613.55cm
4m	22.77, 54.21lx		818.06cm
5m	14.57, 34.69lx		1022.58cm
6m	10.12, 24.09lx		1227.09cm
7m	7.436, 17.70lx		1431.61cm
8m	5.693, 13.55lx		1636.12cm
9m	4.498, 10.71lx		1840.64cm
10m	3.644, 8.674lx		2045.16cm

Note: The Curves indicate the illuminated area and the average illumination when the luminaire is at different distance.

* Please contact our sales for IES file

Pictures :

